

# TrainSchedule

## v.1.0.0

### User Guide

Guide version 1.5  
Nov 2003  
English

© Copyright Ilya Danilov, 2002-2003

All rights reserved.

The information in this document is subject to change without notice.

Author accepts no liability for loss or consequential loss from misuse or any defect or failure of the programs howsoever arising.

3Com, the 3Com logo, Palm Computing and HotSync are registered trademarks, and Palm III, Palm IIIx, Palm V, the Palm III logo, the Palm IIIx logo, the Palm V logo and the Palm Computing platform logo are trademarks of Palm Computing, Inc, 3Com Corporation or its subsidiaries.

Acrobat and PDF are trademarks of Adobe. All other brands and product names may be trademarks or registered trademarks of their respective holders.

## **LICENSE AGREEMENT**

\*\*\* Please read this entire agreement \*\*\*

This End-User License Agreement (the "Agreement") is a legal agreement between you ("Licensee"), the end-user, and Ilya Danilov ("Author") for the use of the TrainSchedule software product ("Software"). By using this Software or any part of it, you are agreeing to be bound by the terms of this Agreement. If you do not agree to the terms of this Agreement do not install this Software.

## **COPYRIGHT**

This Software is protected by both Russian copyright law and international treaty provisions.

## **LICENSE AND DISTRIBUTION**

The copy of this Software is free of charge only for Lite version. You're allowed to make as many copies of Lite version as you wish to distribute. You are not allowed to modify Software.

## **RESTRICTIONS**

You may not nor permit anyone else to de-compile, reverse engineer, or disassemble, modify, or create derivative works based on the Software or the documentation in whole or in part. You may not use the Software for any commercial purpose or public display, performance, sale or rental. You may not use the Software to perform any unauthorized transfer of information (e.g. transfer of files in violation of a copyright) or for any illegal purpose.

## **NO WARRANTIES**

This software and any related documentation is provided "as is" without warranty of any kind. Author specifically disclaims all warranties, expressed or implied, including but not limited to implied warranties of fitness for any particular purpose and of merchantability.

## **LIMITATION OF LIABILITY**

In no event will Author be liable to you for any damages, including but not limited to any loss of data, lost profits, lost savings, commercial damage or other incidental or consequential damages arising out of the use or inability to use this program directly or indirectly, or for any claim by any other party.

## Using the Program

Don't keep in mind you bus schedule, throwaway hard copies and paper sheets. Use TrainSchedule application with your Palm and don't forget to take a look at screen from time to time.

TrainSchedule is easy to use and consists of four basic forms.

### Main Form

TrainSchedule

Now  
5/30/03  
7:41 pm  
Friday

St.Petersburg - Luga  
5 Luga

5/31/03  
7:19 pm -22    7:52 pm +11    12:13 pm +16:32  
St.Petersburg

The Main Form screen appears when you run TrainSchedule through Launcher or another program manager. You can observe three **nearest** departures for current or selected time. Also additional helpful information showed.

### Departure Edit Form

7:46 pm All

12:13 pm St.Petersburg  
12:27 pm St.Petersburg  
1:37 pm Gatchina  
2:21 pm Gatchina  
2:41 pm Ex Sun, Sat Luga  
3:01 pm St.Petersburg  
3:32 pm St.Petersburg  
4:03 pm Ex Tue, Thr, Sat St.Peter...  
4:12 pm St.Petersburg  
6:42 pm St.Petersburg  
6:52 pm St.Petersburg

OK Details Add Delete

Jump to the second screen through menus or by screen tapping or by pressing JogDial navigator. Here you can manage you **departure times**.

### Route Edit Form

Edit Routes i

#	S	Route name	FB
1	<input checked="" type="checkbox"/>	St.Petersburg	<input type="checkbox"/>
2	<input checked="" type="checkbox"/>	Gatchina	<input type="checkbox"/>
3	<input checked="" type="checkbox"/>	Luga	<input type="checkbox"/>
4	<input checked="" type="checkbox"/>	Siverskaya	<input type="checkbox"/>
5	<input checked="" type="checkbox"/>	Routename-5	<input type="checkbox"/>
6	<input checked="" type="checkbox"/>	Routename-6	<input type="checkbox"/>
7	<input checked="" type="checkbox"/>	Routename-7	<input type="checkbox"/>
8	<input checked="" type="checkbox"/>	Routename-8	<input type="checkbox"/>
		All trains	<input type="checkbox"/>

S R I OK Cancel

Manage your routes: edit names, colors, presentation and create routemask profiles for your schedule. Up to 32 routes available at Full version and only 8 in Lite.

## Mask Edit Form

The screenshot shows a software window titled "Edit Routemasks". Inside, there is a list of three routemasks: "00:00-23:59 All trains", "00:00-23:59 St.Petersburg", and "00:00-23:59 Luga". Below the list, there are three input fields: "Name:" with the value "All trains", "Daymask:" with a row of seven buttons labeled "M", "T", "W", "T", "F", "S", "S", and "Time:" with the value "12:00 am - 11:59 pm". At the bottom, there are five buttons: "Close", "Add", "Delete", and two arrow buttons (one pointing up, one pointing down).

Edit Routemasks	
00:00-23:59	All trains
00:00-23:59	St.Petersburg
00:00-23:59	Luga

**Name:** All trains

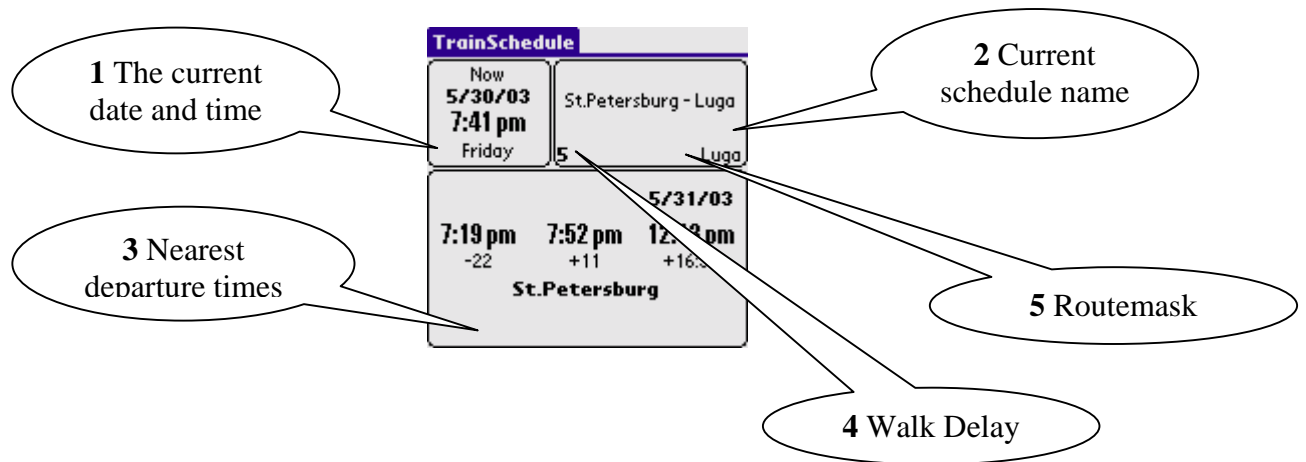
**Daymask:** M T W T F S S

**Time:** 12:00 am - 11:59 pm

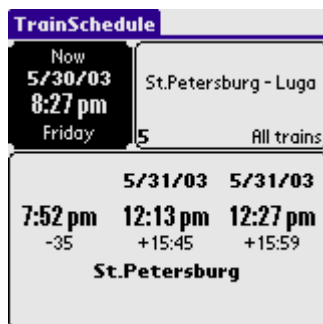
Close Add Delete ↑ ↓

Full version includes routemask engine, that helps with fast and automatic route switching. Define up to 7 routemasks and set time\weekday for each: you can see departures for different routes depend on time.

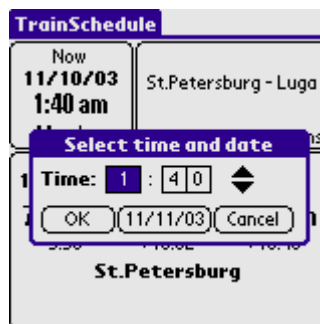
## Main Form



- 1** *The current date and time.* You can select date and time for nearest departure lookup by tapping on this region:



Tap 1<sup>st</sup> region



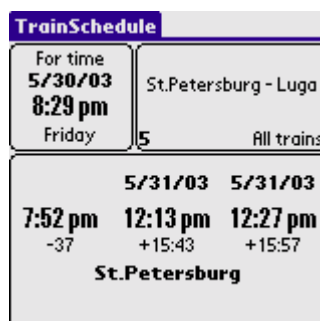
Select time



Select date (if need)

Current time and date assumed by default. Modify time and date at “Select time and date” dialog then press “OK”. When displaying departures for selected time mode, “**For time**” note will appear at this box.

For cancel displaying departures for selected time and date, tap this region once again.



2

*Current schedule name<sup>1</sup>.*

Note, that this region is available for tapping also. Default action is to open another schedule base. You can customize it through “Options|Actions” menu. For example, you can assign “Schedule|Rename” command for this region tap.

TrainSchedule	
Now 5/30/03 8:38 pm Friday	St.Petersburg - Luga 5 All trains
<div> <div>5/31/03 5/31/03</div> <div>7:52 pm 12:13 pm 12:27 pm</div> <div>-46 +15:35 +15:49</div> <div>St.Petersburg</div> </div>	

Tap 2<sup>nd</sup> region

TrainSchedule	
Now 5/30/03 8:38 pm Friday	St.Petersburg - Luga 5 All trains
<div> <div>5/31/03 5/31/03</div> <div>Rename Schedule</div> <div>Enter new name:</div> <div>St.Petersburg - Luga</div> <div>OK Cancel</div> </div>	

Enter new schedule name

3

Third region contains *three departure times*:

Previous		Nearest		Next	
9/26/02		1:37 pm		12:13 pm 12:27 pm	
-19:58		+2:37		+2:51	
St.Petersburg		Route (for Nearest departure)		Departure time	
Details		Comment (for Nearest departure)		Remaining time	

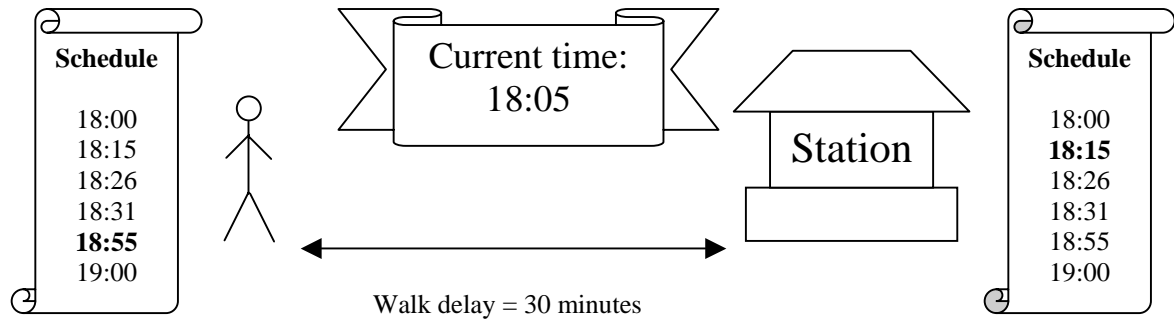
Left departure corresponds to **previous** departure time; middle to **nearest** and right to **next** after nearest. Departure will be calculated and showed for current or selected time.

This region tapping brings you to edit departures form (this tap also customizable).

<sup>1</sup> In Full version only

4

*Walk delay.* As a rule, you need some time to reach train\bus station.



You can vary Walk Delay in some different ways:

Choose “Options|Preferences” in a form menu

You can open “Schdule Properties” form by tapping on a Walk Delay.



Use hardware scroll buttons (may be reassigned for another functions when Full version installed). Also, Jog Dial navigator (Sony), Jog Wheel (Handera), TT pad may be used.

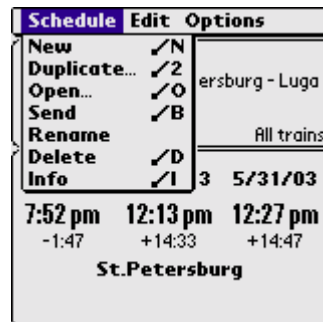


TrainSchedule	
Now 5/31/03 12:06 am Saturday	St.Petersburg - Luga
5	All trains
5/30/03	
7:42 pm	12:13 pm 12:27 pm
-4:24	+12:07 +12:21
St.Petersburg	

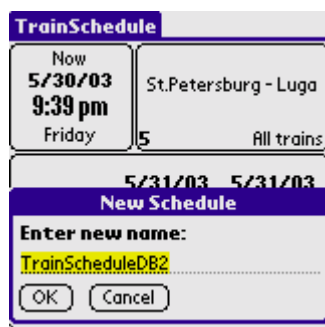
Displays current routemask. Also tappable (opens “Edit Masks” form). See more detailed description in Route managing chapter.

## Database operations

You can manage you schedules by creating new, duplicating, renaming, editing, beaming and deleting with the main form's menu<sup>2</sup>:

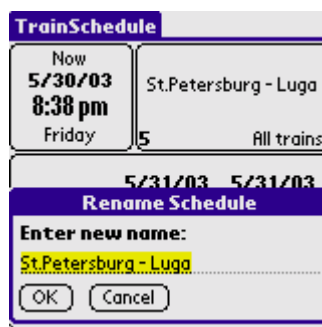


Schedule|New:



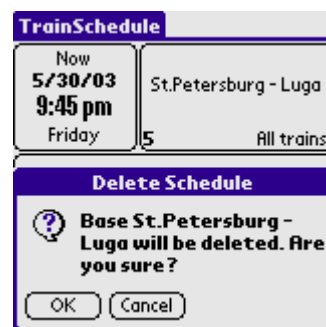
Create new empty schedule and open it

Schedule|Rename:



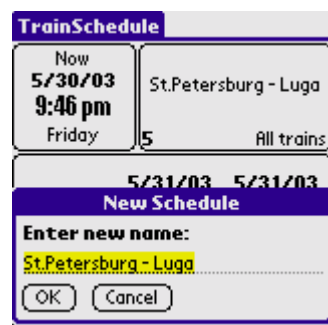
Rename existing schedule

Schedule|Delete:



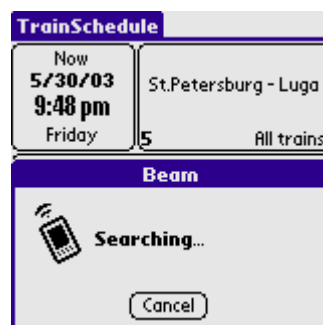
Delete current schedule

Schedule|Duplicate:



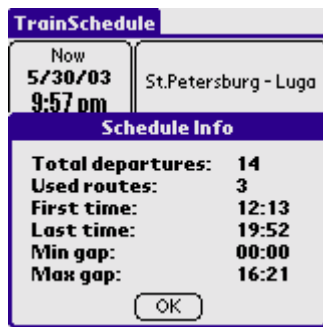
Create a copy of existing schedule and open it

Schedule|Send:



Sending schedule through IrDA

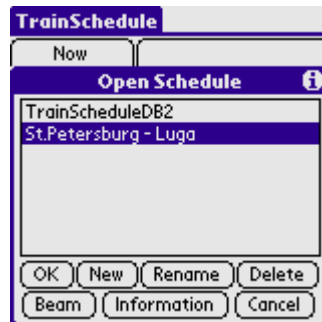
<sup>2</sup> Only “Departures”, “Routes”, “Beam” and “Info” operations available in a Lite version



“Schedule|Info” command displays some statistic for current schedule.

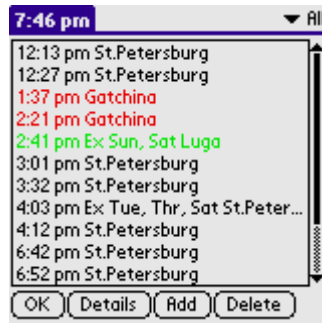
- Total departures count
- Used routes count
- First and last departure time in a day
- Maximum and minimal pause between departures

“Schedule|Open” provide your same operations as above for any schedule database plus ability to switch between schedules by opening corresponding base:



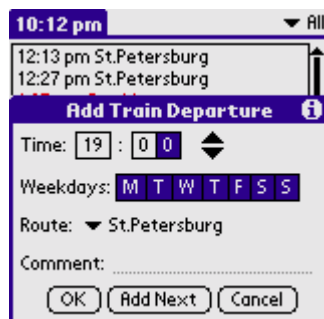
## Departures operations

You can choose “Schedule|Edit” command from Main Form menu or press and release JogDial to enter Departure Edit form:



Scroll departures list by hardware buttons, scroll bar or JogDial navigator.

To add new departure, use “Add” button. Add Train Departures form will appear:



- **Time:** Departure time, always in 24h format. Use spin buttons to set departure time.
- **Weekdays:** Select buttons with departure days. For example, for weekend departure, uncheck all buttons except two “S” (Sandy and Saturday)
- **Route:** Choose one of available routes for this departure.
- **Comment:** Simple comment for this departure. It will appear in a bottom line in a Main Form view.

If you need to enter another departure, press “Add Next” button – departure will be added and this form will be reopened for entering new one. Otherwise press OK button to add departure to schedule.

Press “Details” or tap twice departure line to modify existing departure record:

You can use “<” and “>” buttons for departure list navigation. Note that all changes will be accepted, like “OK” button pressed.

Delete departure by pressing “Delete” button. You can disable departure delete warning through “Options|Preferences” menu command (see below).

There is the simple route filter in Edit Departure Form<sup>3</sup>. It placed at right upper corner and contain 33 choices: one “All”(filter disabled) and 32 for each route. When you choose route name in this filter, only departures for this route will be displayed. This is only display filter *for departures editing*, and it does not affect to nearest departures showed at Main Form.

Tap left upper corner  
and select route

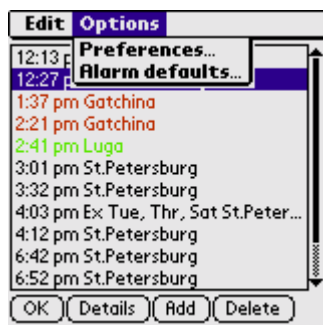
Display view after  
that

Some additional actions available from form menu:

<sup>3</sup> In Full version only

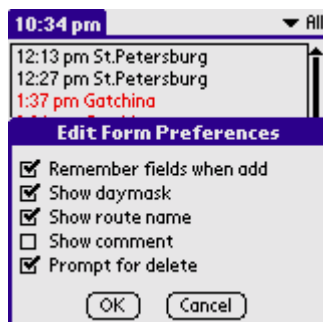


- **“Routes”**: opens Route Edit form (see below)
- **“Default Record”**: you can define default data for adding new records to base
- **“Delete All”**: delete all departures after confirmation.
- **“Set Alarm”**: set/unset weekly alarm for selected departure
- **“Exit”**: return to Main Form (acts same as OK button).



- **“Preferences”**: opens Edit form preferences dialog
- **“Alarm defaults”**: opens dialog with Train Schedule alarm presets

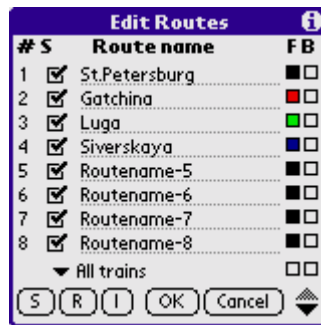
Use “Options|Preferences” menu command to customize departure records view and another functions. By default, departure time, weekday mask and routename displayed:



- **Remember fields when add**: when checked, adding new record to base will cause also copying entered data to default record (except weekday mask and comment fields). Useful for multiple Add operations.
- **Show daymask**: allow to display daymask in the list
- **Show route name**: allow to display route name in the list
- **Show comment**: allow to display comment in the list
- **Prompt for delete**: if checked, warning will be displayed on deleting any departure record. Note: you can’t recover deleted records!

## Route managing

Up to 32 routes can be used in Full version (only 8 in a Lite version). You can assign names and colors for each route using “Edit | Routes” command, available from Main form and from Departures edit form:



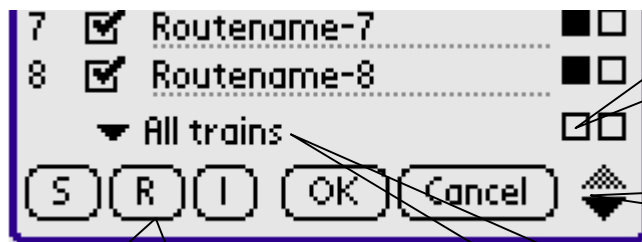
Columns description:

- # Route order number (not editable, for your information only)
- S Show this departures with this route at main form when lookup nearest departures (tap checkbox to enable or disable).
- Route name Symbolic name assigned to route (will appear at Main Form, Edit Departures form when adding or modifying records and at route filter).
- F Foreground color for displaying (used in Edit departures form)
- B Background color for displaying (used in Edit departures form)

Tap F and B color boxes for color choosing through “pick color” dialog (grayscale gradation for non-color devices):



There are some additional controls at bottom:



Use this color boxes to set foreground and background colors for **all** routes simultaneously.

Scroll routes by 8 (Full version)

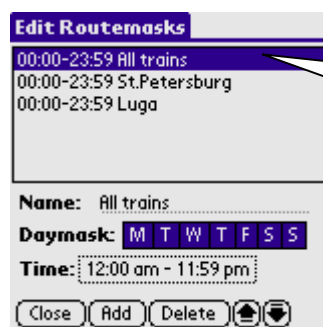
Buttons functions:

- S Set checkboxes for all routes
- R Reset checkboxes for all routes
- I Invert checkboxes state for all routes

Switch current routemask profile (Full version). Note, that you can't change "S" checkbox for first routemask. It is already "All trains" routemask.

Route showing is a very useful function when analyzing current situation. To provide additional service with switching routes on or off routemask mechanism implemented in Full version.

Use "Edit|Masks" menu command from Main form to open "Edit Routemasks" form:



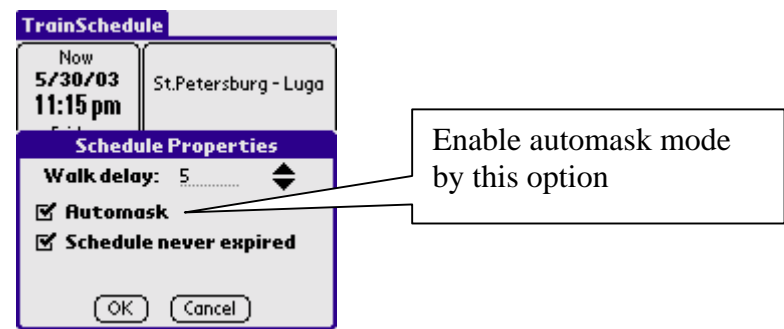
First "All trains" routemask. You can't shift position for this mask, and you can't delete it. But you can change name, time and daymask.

You can define up to 8 routemasks for your schedule. You can add, delete or modify all masks except first. First routemask is a "All trains" synonym and always presented.

Each routemask (except first) contains predefined set of "S" checkbox state for all routes. Use "Edit|Routes" form (see above) to define this set: open it, tap routemask trigger, choose routemask name, make checkbox selections for all routes and tap "OK".

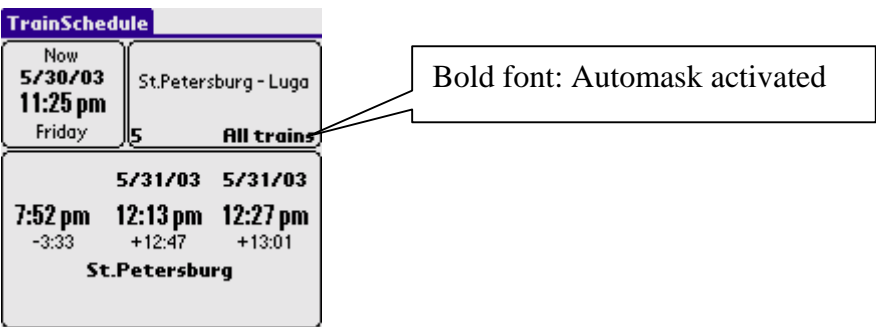


Routemasks can be selected automatically, in accordance with current time and weekday. Enable this mode by choosing “Automask” checkbox in “Schedule Properties” form:

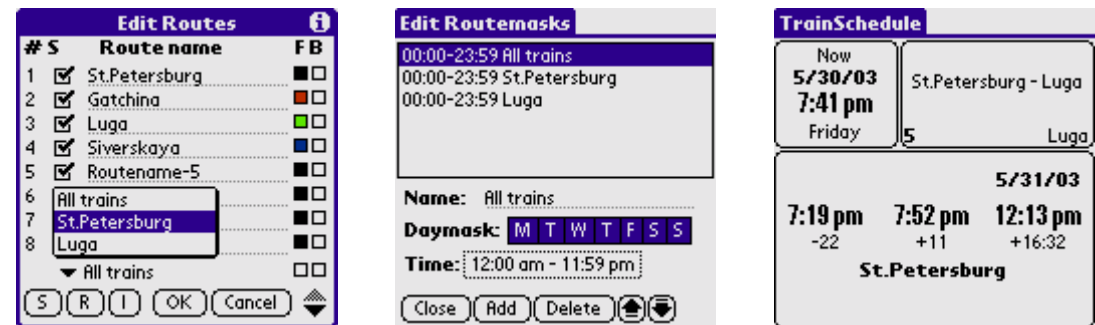


When choosing routemask in auto mode, program analyzes each routemask in order that you define at “Edit Routemask” form (from top to bottom). So, place it in a right order with arrows buttons.

If no mask found for this time and weekday, first “All trains” mask is assumed. You can determine Automask mode: when enabled, bold font used to display routemask name at Main form:



For *non-automask* mode, current mask selected manually:



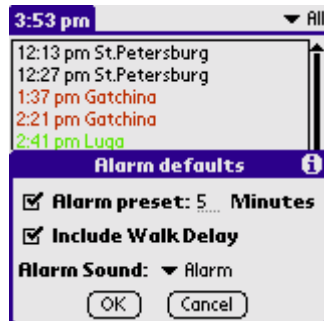
Select routemask in  
“Edit Routes” form

Select routemask in  
“Edit Routemasks”  
form

Use predefined  
hardware button

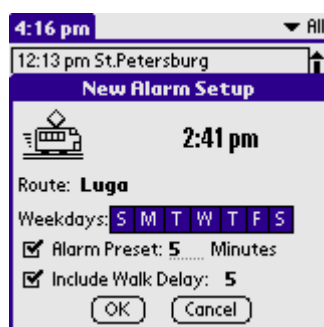
## Alarming

You can set one departure for alarming. Use Departures Edit form menu “Options|Alarm defaults” for choosing alarm melody and preset values:



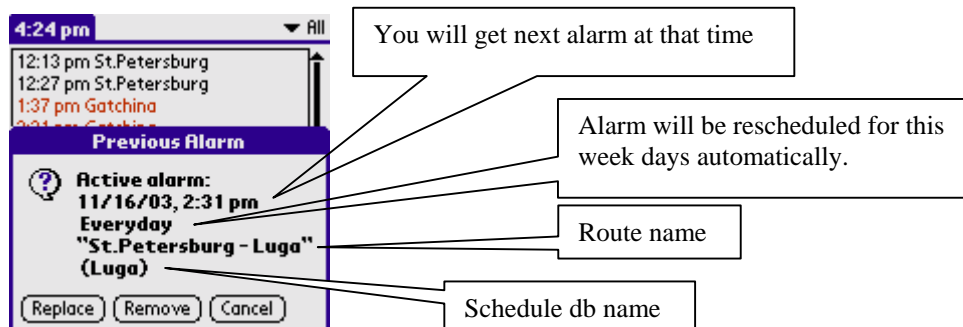
- “**Alarm preset**”: Default minutes before departure time for alarming.
- “**Include Walk Delay**”: default answer to question “Is it need to alarm before WalkDelay minutes to departure time?”
- “**Alarm Sound**”: choose one sound for all TrainSchedule alarms.

Second, select departure for alarming (tap once), and choose “Edit|Set Alarm” menu command:



. You can see departure time, route and daymask. You can change departure daymask as you need, but you can choose at least one day. Also, you can modify alarm preset and Walk Delay adding to this preset.

You can view, modify or delete active alarm: choose “Edit|Set Alarm”. You will see message box when alarm active:



Choose **Replace** for current alarm deactivation and new creation;  
Choose **Remove** for disabling currently active alarm;  
Choose **Cancel** if you don't wish to modify currently active alarm.

## Schedule expiring

By default, entered schedule will never expire. To assign expiration date, open “Schedule Properties” form:

**TrainSchedule**

Now  
5/30/03  
9:25 pm

St.Petersburg - Luga

**Schedule Properties**

Walk delay: 5

☐ Automask

☒ Schedule never expired

Expiration date: 5/30/04

OK Cancel

First, uncheck “Schedule never expired” checkbox and “Expiration date” trigger with some default date will appear.

Second, tap on it and define expiration date. In this example, last valid date for this schedule is 29 may 2004

Expired databases name has an exclamation prefix at “Open Schedule” form:

This schedule expired – “!” exclamation sign says ☺

**TrainSchedule**

Now

**Open Schedule**

TrainScheduleDB3

TrainScheduleDB2

!St.Petersburg - Luga

OK New Rename Delete

Beam Information Cancel

Alert will be showed when open expired databases:

Open expired schedule

**TrainSchedule**

Now  
5/31/03  
11:25 pm

St.Petersburg - Luga

**Schedule expiration**

**Schedule**  
**"St.Petersburg - Luga"**  
**expired on 5/31/03.**  
**Continue with this**  
**schedule?**

Yes Choose Edit Properties

Open schedule and then open properties (for example, for expiration disabling)

“Open Schedule” form will appear. You can choose another schedule database.

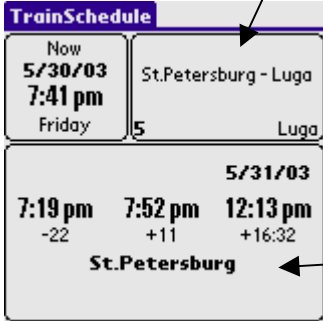
## User actions customizing<sup>4</sup>

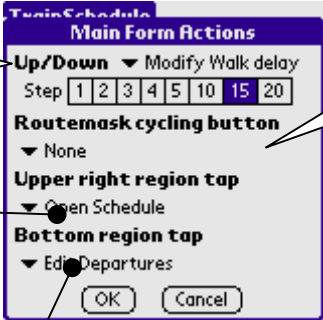
Main form is sensitive for tapping and scrolling. Some default behavior may be reassigned. Use menu command “Options|Actions” for “Main Form Actions” form opening:

Hardware scroll buttons may be used for:

- Increasing and decreasing Walk delay value
- Routemask switching

Assign “Address”, “Datebook”, “ToDo” or “Memo” button for routemask cycling.





You can assign next actions for tapping:

- Rename schedule
- Open Schedule
- Go to Edit Routes form
- Go to Edit Departures form
- Open Schedule properties form
- Go to Edit Masks form
- Reset Walk Delay at 0

<sup>4</sup> For Full version only